



RODIN 4 D

Global CAD/CAM solution for O&P



RODIN D

Founded in 2004, at the heart of the first largest French group producing custom-made orthopaedic devices, Rodin4D is **specialised in the development of software**, milling machines and 3D scanners for the orthopaedic industry. Constantly seeking innovation, Rodin4D offers its clients increasingly productive and easy to use solutions.

World leader since 2010 with more than 2300 users worldwide, our priority is to make each client's project a success and provide support for their teams.

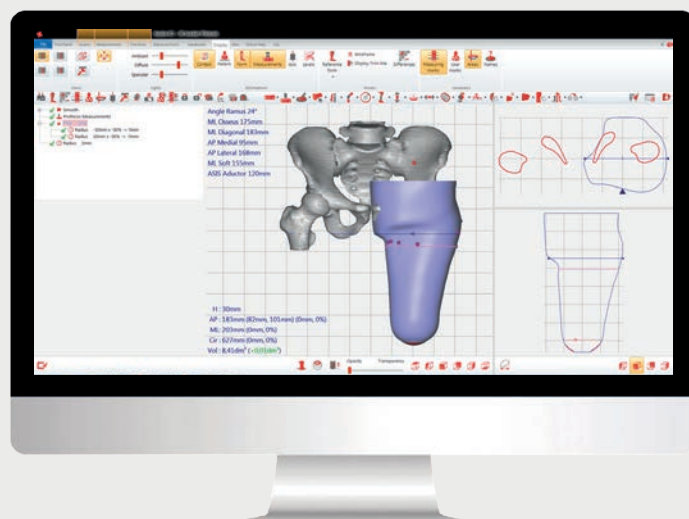


1 ACQUISITION

2 MODIFICATION



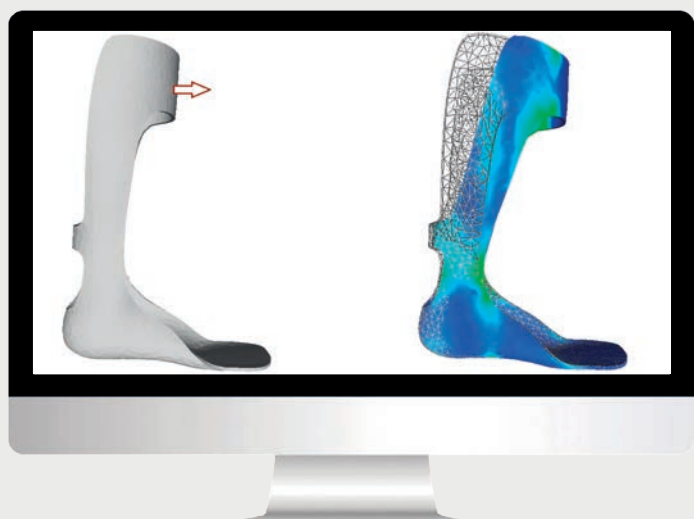
M4D
Echo Digitizer
Captevia



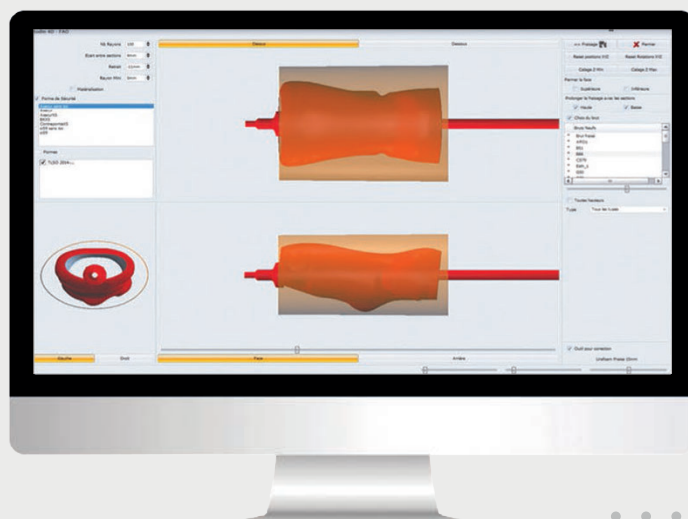
Neo
Cube



SIMULATION



3 MILLING



Neo CAM
R4D Mill
3D Print
Robotmaster



1 ACQUISITION

Fast, accurate and painless acquisition

Our goal is to provide reliable acquisition solutions, suitable for any body part, without changing your work habits.



M4D Scan

Fully integrated with Rodin4D

- Fast, light and portable
- Scan any body part in 3D
- Fast data acquisition
- Automatic post-treatment of the image
- M4D specialized software
- No lasers
- Recommended for plagiocephaly helmets

Echo Digitizer

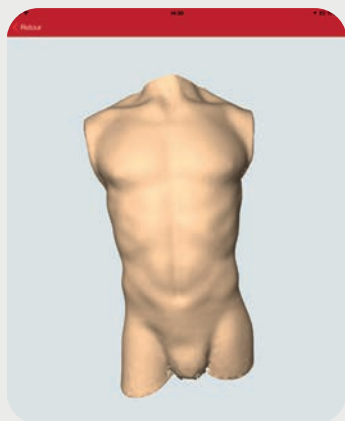
Duplicate sockets in 4 minutes!

- Digitize your negative moulds
- Fast and accurate
- Ideal for plasters, sockets, test sockets, resins, impression boxes



Structure Sensor + Captevia

Adopt a low cost digitising solution for all your teams

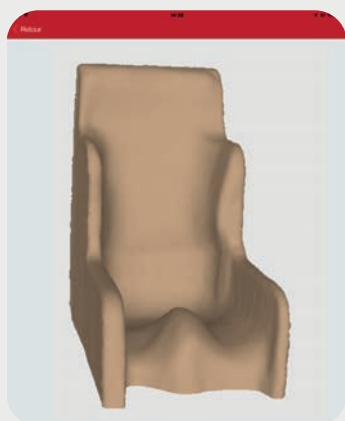


Brace

Structure Sensor

The first 3D sensor for mobile devices

- Free to digitise: no PC, no cable
- Ultra-portable (less than 450g)
- No training required
- Class 1 Infrared laser technology

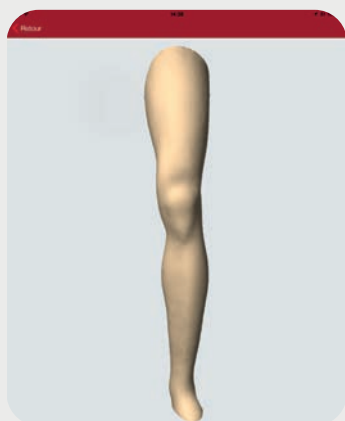


Seat

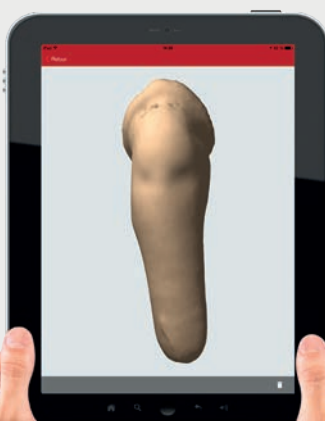
Captevia (for Structure Mark 2)

More accurate, more efficient & faster

- Save 3D files on your iPad
- Direct link to our software, Rodin4D Neo
- Send files by email or via Dropbox



Knee



Tibial



2 MODIFICATION

A single software package for all your forms

neo
by Rodin4D

Neo is the heart of our global CAD/CAM solution.
Neo brings together all the functions CPO need :
body jackets, prostheses and orthoses.

| Create your own tools

- Create your own rectification protocols and share them with your technicians

| Tool history

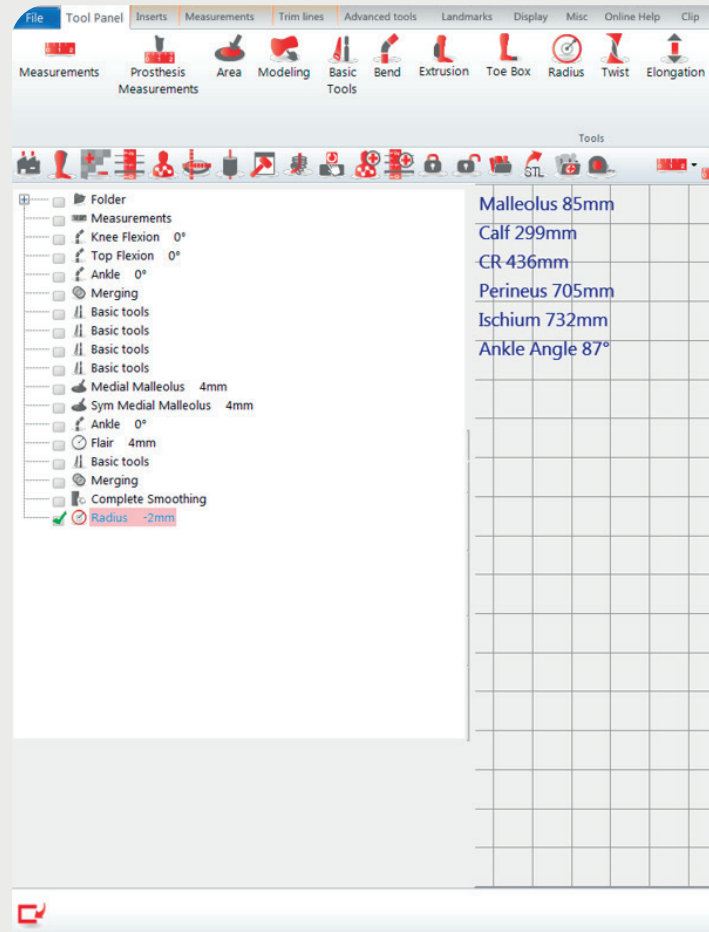
- Keep a history of all your changes

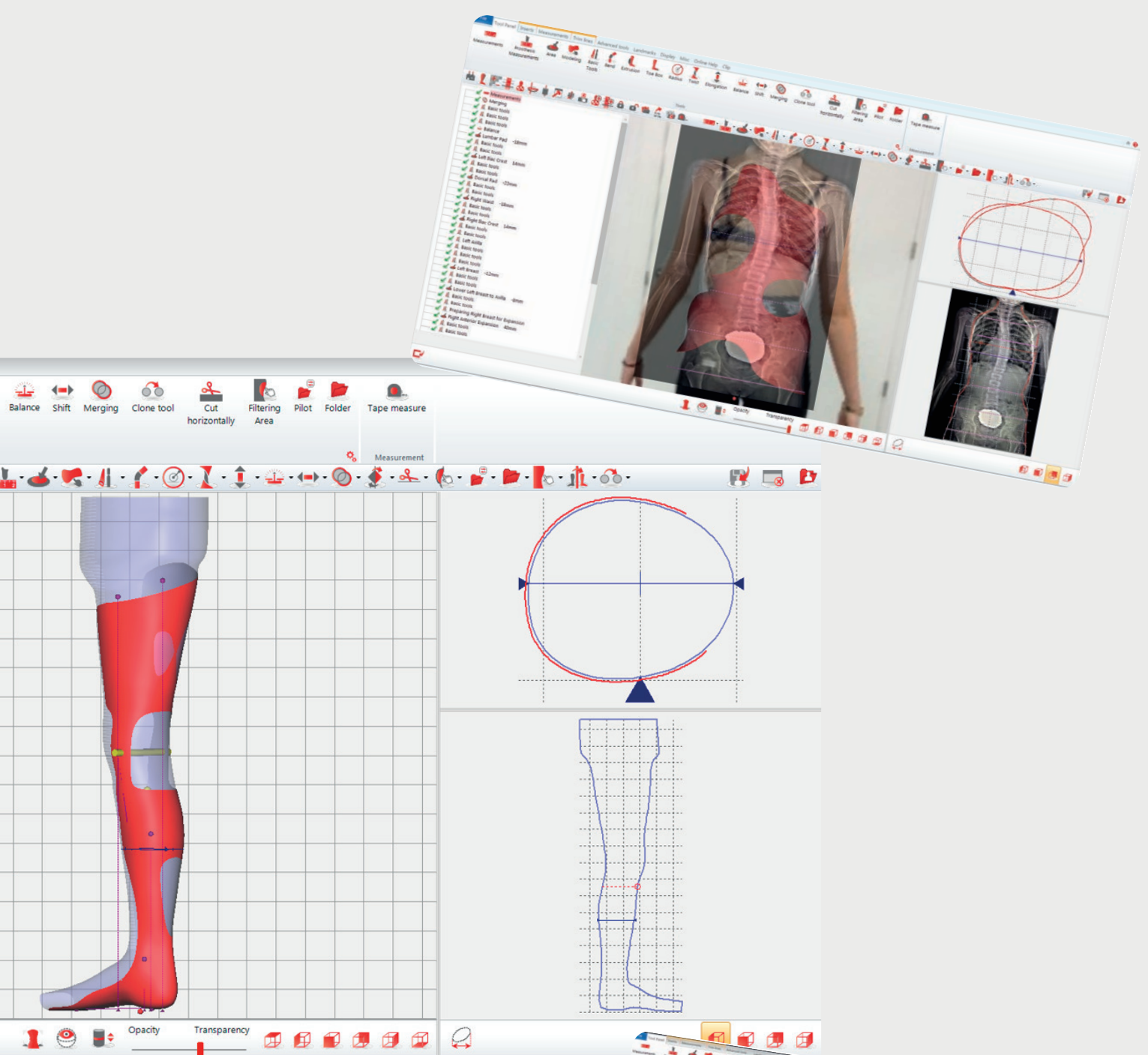
| Fast training

- Two days of training are enough to master the software
- Quickly master all functions
- Access to self-training videos
Technical support

| Extensive functionality

- Import scanned forms (STL, AOP...)
- Libraries of pre-rectified forms
- Import photographs, CTscan, IRM or DICOM files
- Manage patients and scans, photographs and associated 3D forms
- Use professional tools to clean the 3D form
- History of all changes
- Extensive choice of rectification tools (more than 25 different tools)
- Import / export from and to the main industrial and orthopaedic formats
- Print reports of the work carried out
- Draw the trim lines and forms for machining
- and more!





| Import CAPTEVIA

| Created by and for CPO

- A complete professional solution
- Constantly evolving with regular releases of new versions

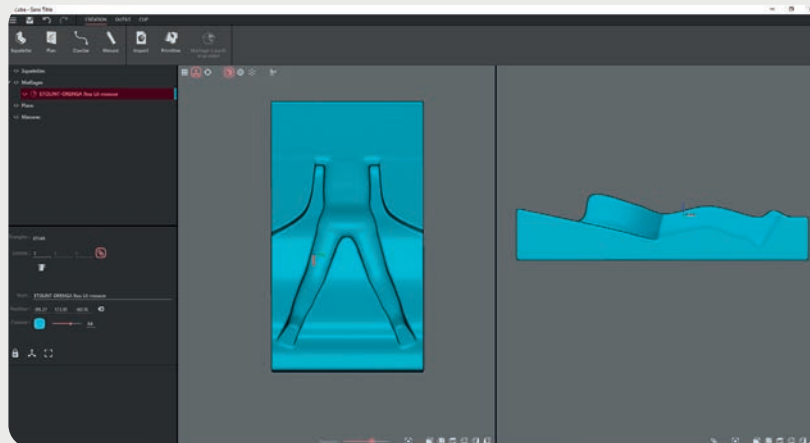
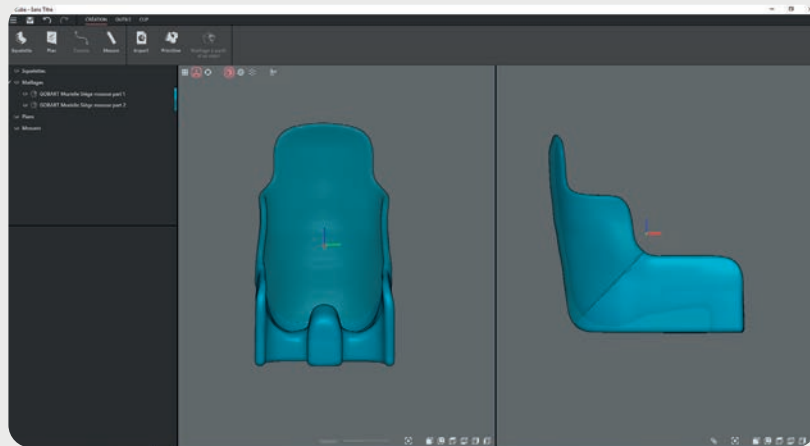




Unleash your creativity for milling and 3D printing!

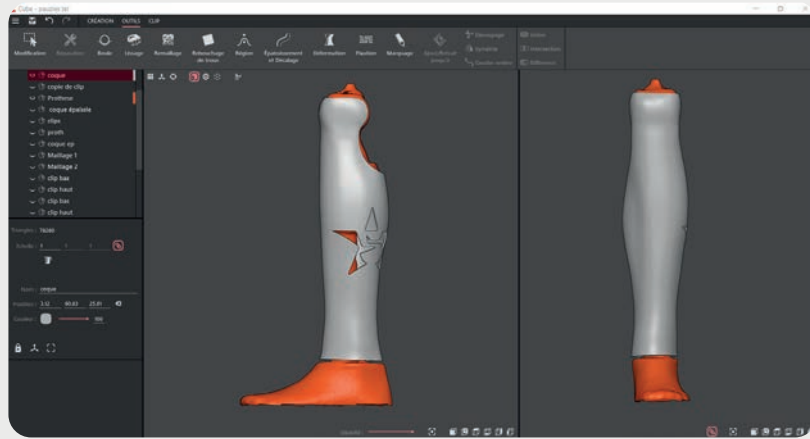
With CUBE, you are free to rectify and design seat braces, beds, standing devices...verticalizers and all forms from Neo.

Work with a scan of your patient or with a file from Neo



| Tools for the CPO

- Distortion tool
- Degree of abduction
- Pad design
- Armrest design
- Standard or customised adjustment of your shell



| Rectification

- Import scanned forms (STL)
- Import photos
- Cleaning and deformation of the 3D form
- Model your negative and positive forms
- History of modifications



| Are you ready for 3D printing?

- STL files fixing
- Marking tool
- Assembly
- Thickening
- and more!

cube



3 MILLING

Milling machines to meet your needs

Rodin4d offers an open, simple and secure system.

Our milling machines are compatible with the R4D CAD/CAM software, but also with main orthopaedic formats (AOP, IGES, STL, etc...)

C milling machine

Milling capacity: 1100 mm x 600 mm

Ideal for machining:

- Seat braces
- Braces
- Cosmetic prostheses
- Lower members
- Verticalizers



S milling machine

Milling capacity: 700 mm x 500 mm

Ideal for machining:

- Braces
- Femoral prosthesis
- Tibial prosthesis
- Lower members
- Possible to mill plaster

SX milling machine

An open system for milling all your shapes

Milling capacity: 700 mm x 500 mm

Ideal for machining:

- Ankle-foot orthosis (in two carving)
- Tibiale prothesis
- Brace / Torso Brace
- Femoral prothesis
- Helmets
- Positives for insoles
- Upper Arm prothesis

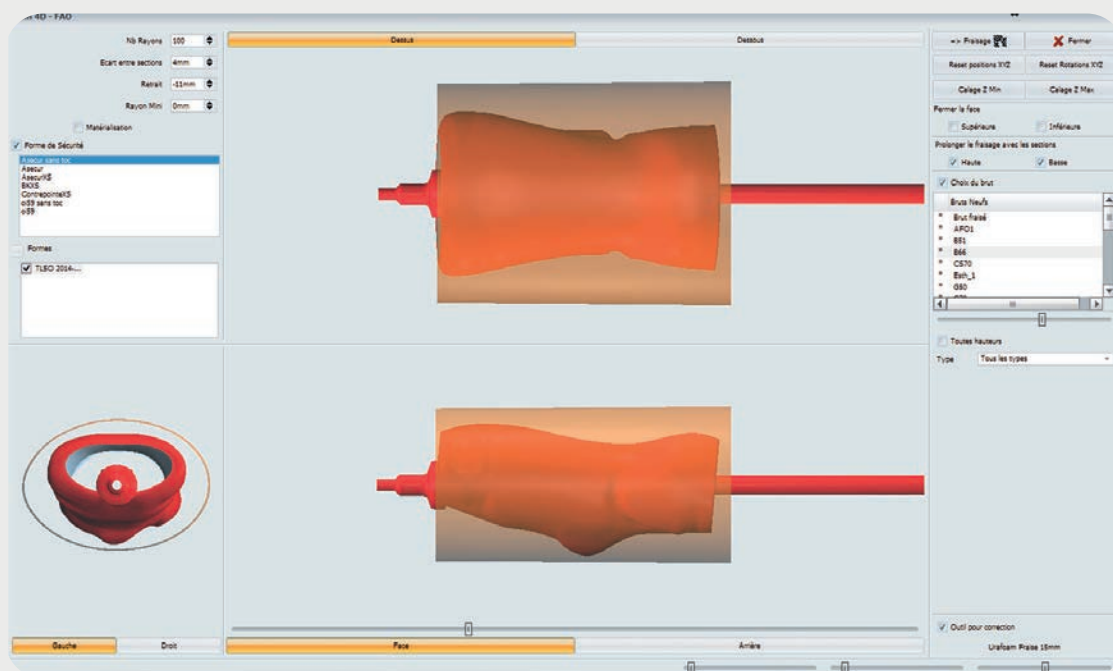


CAM SOFTWARE

Computer Aided Manufacturing

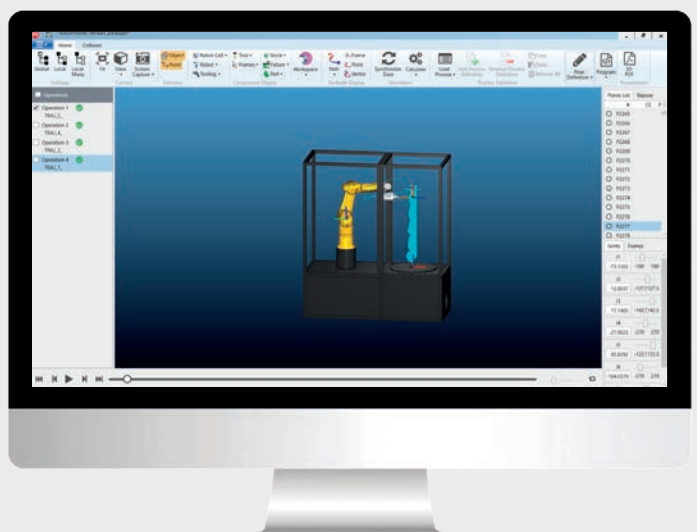
| The Neo CAM module

- No machining knowledge is required to program your 3 axis machining operations
- Optimise your machining costs in one click, with the already machined blocks manager
- Export to various file formats (STL, PIM, G-code...)
- Manage the trim lines for your devices



| Robotmaster

- Simulation options for material removal, visualization of the robot trajectory, automatic collision control, trajectory optimization and management of milling singularities.
- 4-years warranty (optional)
- Absolute calibration
- Reduced time between production cycles



CLIP

Collaborative platform



CLIP is a collaborative platform for exchanging and annotating your 3D CAD data from Neo or Cube. Save your teams time and increase efficiency and security.

Share, annotate and validate your designs from any medium (windows, mac, iPhone, android etc). Accessing your CAD data has never been easier!



| Multi-platform

PC, Mac, Android, Apple...

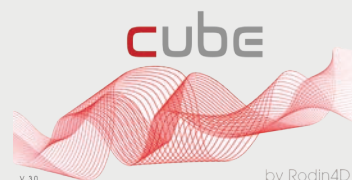
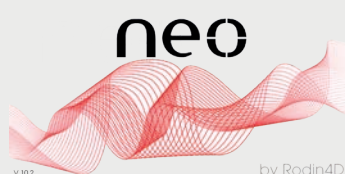


iPhone

| Secure

Storage of patient data on authorised health data servers.

| Integrated with:





7 axis Robots range



"Easy handling thanks to a complete and personalized training."

M. Xenofon Chronopoulos - **REHABLINE (Grece)**



Small as a carver, powerful as a robot

Installed in its autonomous cell, Victor Compact provides you with a **simplified, practical and movable solution**. More compact, this new robot allows you to mill any type of shape (including AFO).



Double your production capacity

Has your production increased and you want to **double the milling capacity** without investing in a second robot? Our engineers, who come from the O&P sector, have designed **an additional module** compatible with Victor Compact.



Made for your needs

All manufacturing plants are unique, so we decided to offer you a **tailor-made solution**, fully customizable, adapting to all of your needs.



| Advantages

- Agile, small & light
- Fast : reduced production time and times between cycles
- Simple : “plug & play” technology

BLOCKS AND ACCESSORIES

Optimise the production of your devices

Committed to offering a complete solution, Rodin4D also provides consumables and accessories suitable for your activity.



Foam blocks

Specially adapted for the orthopaedic industry

- Polyurethane foam blocks
- More than 20 references available
- Different densities depending on the device type
- Rodin4D exclusive manufacturing



Pyramid of thermoforming

To equip thermoforming bars

- Used to fix foam blocks to your thermoforming bars



PU-Fixpro Fastener

An "all-in-one" thermoforming tool

- Used to fix the foam block and create the vacuum



TFM Tool

Trans-Femoral Measurement Tool

- Tool for taking trans-femoral measurements
- For men and women
- A single tool for all measurements
- Measuring tape equipped with a calibrated spring
- Constant measurements

Slide calliper

Developed by Rodin4D

- Tool to take measurements
- For simple anatomical forms



TECHNICAL SUPPORT AND TRAINING

Give our customers entire satisfaction

Rodin4D focuses much of its efforts on technical and sales support, as well as training.

Technical support

A team of technicians at your service

- Available wherever you are, thanks to our team of distributors present throughout the world
- By telephone or email
- Multilingual support

Internet assistance

A module to guide you remotely

- A simple module, free of charge
- Problem can be seen directly on the customer's screen
- Fast problem solving
- Mini online training



Help available in Rodin4D Software

Help options can be accessed from the software

- Request form in Rodin4D Soft
- Access to self-training videos

Rodin Education

Training for optimal learning

- Training sessions throughout the year
- For all types of users (beginners, advanced, expert)
- Training on new features and updates
- Possibility of personalised training sessions





RODIN SAS

FRANCE

5 impasse des Mûriers
33700 Mérignac

+33 (0)5 56 47 77 13

+33 (0)5 56 47 77 14

info@rodin4d.com

Rodin GmbH

GERMANY

Elsternweg 4
D-89547 Gerstetten-Heldenfingen

+49 (0)7323 952501-0

+49 (0)7323 952501-9

info.de@rodin4d.com



Global CAD/CAM solution for O&P

