



VICTOR[®]
O&P 7 axis robot range



RODIN  4D

Global CAD/CAM solution for O&P



Global CAD/CAM solution for O&P

Founded in 2004, at the heart of the first largest French group producing custom-made orthopaedic devices, Rodin4D is **specialised in the development of software**, milling machines and 3D scanners for the orthopaedic industry. Constantly seeking innovation, Rodin4D offers its clients increasingly productive and easy to use solutions. **World leader since 2010** with more than 1000 users worldwide, our priority is to make each client's project a success and provide support for their teams.





“After 20 years of teaching people how to do the MAS socket, I have started working with the Rodin4D technology and his Victor robot. I realized I could get the shapes I obtained in the past with plaster. Faster and more accurately, this robot can mill shapes that are not possible to obtain with a 3 or 4 axis system.”

Marlo Ortiz - Ortiz International



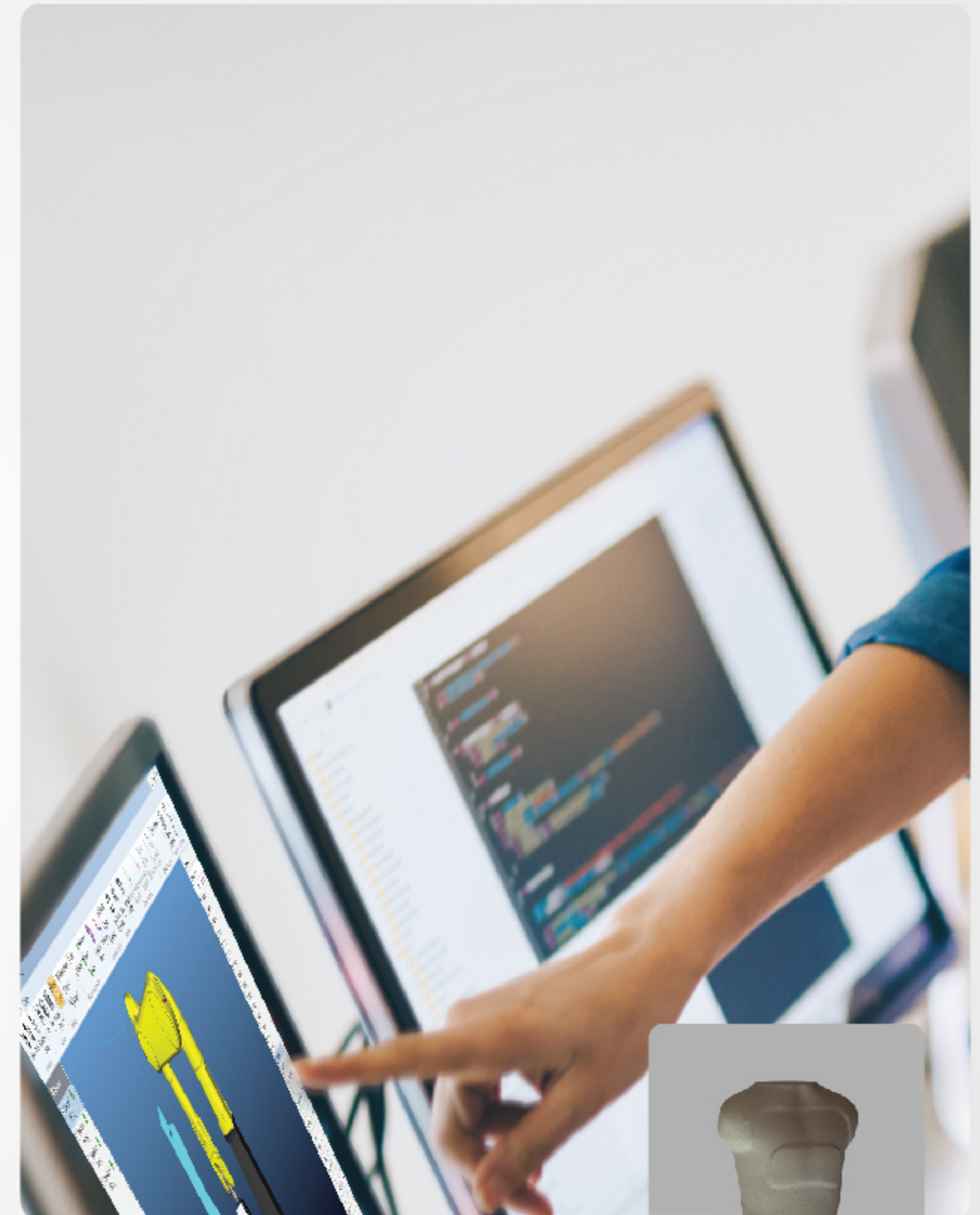


50 robots installed worldwide in 3 years

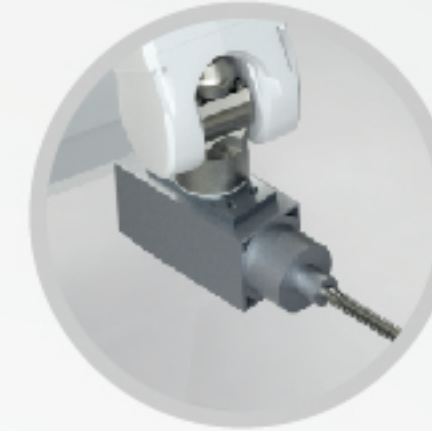
Our range of Robots is **developed by our team of CPO's and engineers** to cater fully for the orthopaedic professions. **Only 3 days of training** are needed in order to be able to handle our Victor Robots and no special knowledge of robotics is required.

With more than **50 Victor robots installed worldwide** in less than three years, we have a proven track record in terms of installation, maintenance and consulting.

Designed with electronic and mechanical components available worldwide, the maintenance of our **solutions remains simple and economical** throughout the life of your Victor Robots.



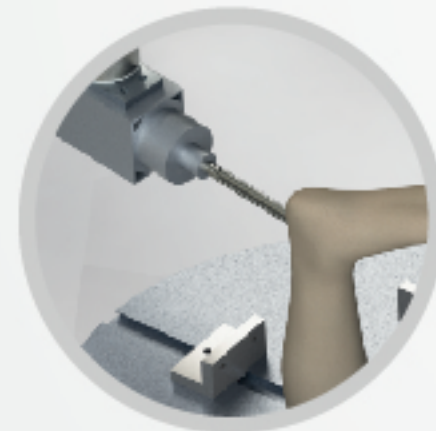
A complete solution for any type of workshop



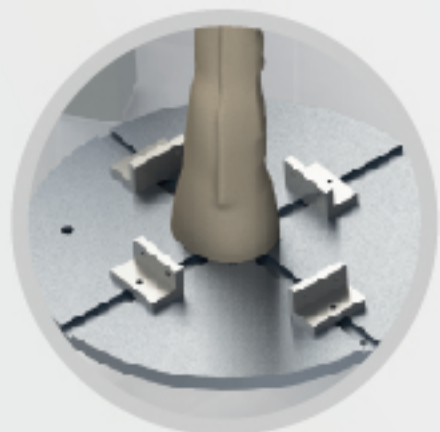
Electro-spindle
increased durability / proximity of workpieces



Robotic arm
optimized internal wiring / sealing



Tool
6 teeth / trajectory accuracy



Rotary table
increased milling stations / sequential rotation





Small as a carver, powerful as a robot

Installed in its autonomous cell, Victor Compact provides you with a **simplified, practical and movable solution**. More compact, this new robot allows you to mill any type of shape (including AFO). Its **speed, accuracy**, and **ease of use** remain unchanged and provide similar milling capabilities. Delivered with a **rotary table** in a cell measuring 80cm wide, fixed on wheels for easy transport, Victor Compact does not require any special installation.



”

***Victor allowed us
to be autonomous quickly.***

M. Nicolas Folcke **FOLCKE ORTHOPEDIE (France)**



Double your production capacity

Has your production increased and you want to **boost your milling capacity** without investing in a second robot? Our engineers – who come from the orthopaedic sector – have designed an **additional module** compatible with Victor Compact. By simply adding it to the original installation or a posteriori, this additional cell provides a second rotary table to make it a Victor Compact Plus.



*Easy handling thanks to
a complete and personalized training.*

M. Xenofon Chronopoulos **REHABLINE (Greece)**





Made for your needs

Our desire is to allow all our users **unlimited production**. All manufacturing plants are unique, so we decided to offer you a **tailor-made solution**, fully customizable, adapting to all of your needs. Victor Unlimited has all the advantages of the Compact version with all the possible **multi-station configuration** options, guaranteeing increased **productivity** and additional **autonomy** for programmers.



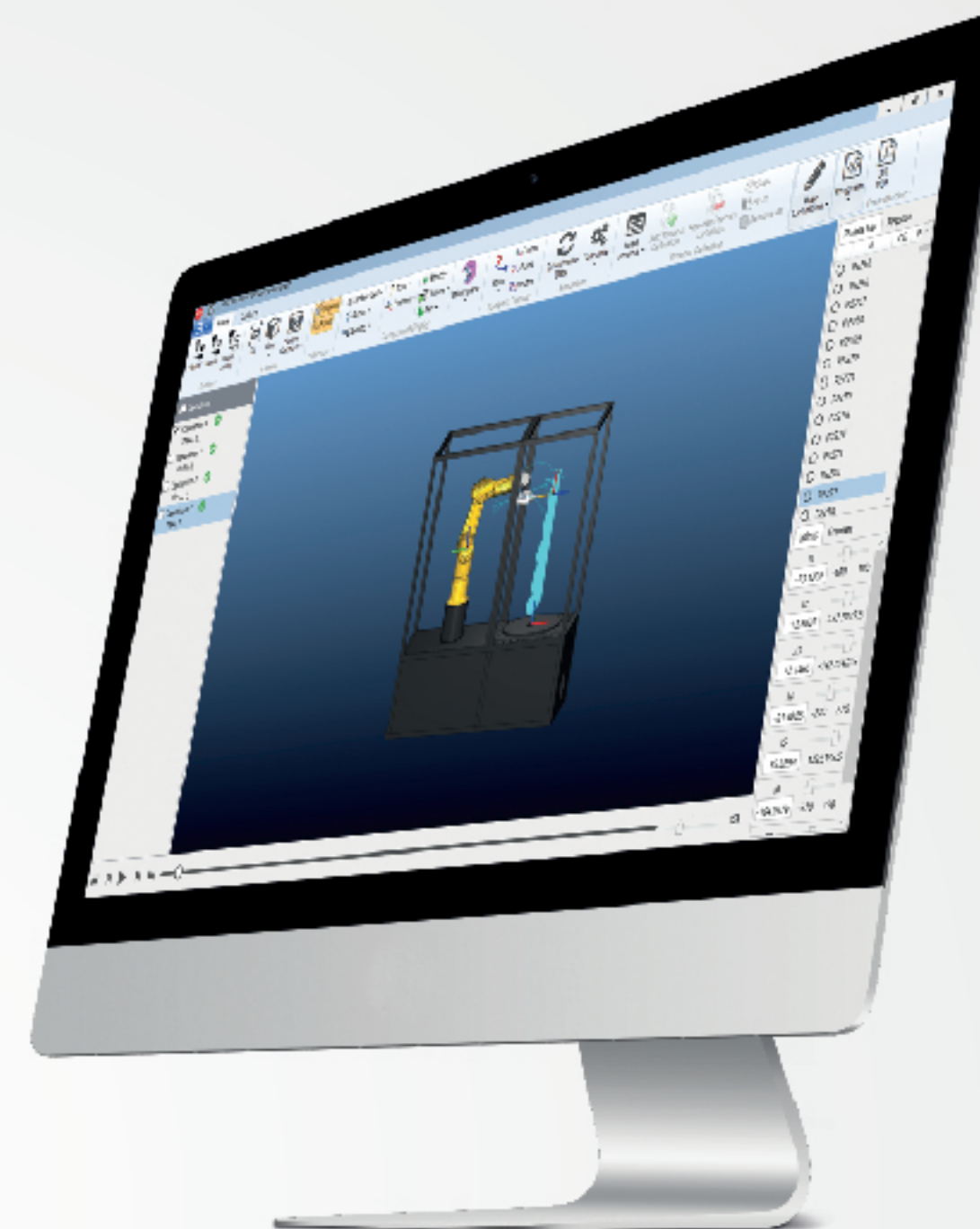
***Victor adapts to all
my needs without limits.***

M. Wilfried Maurence **Lagarrigue Aquitaine (France)**



Features of the range

- **Press button**
pre-defined and customizable machining strategy with a collection of milling templates for all types of orthopaedic devices.
- **RobotMaster software**
simulation options for material removal, visualization of the robot trajectory, automatic collision control, trajectory optimization and management of milling singularities.
- **4-year warranty (optional)**
- **Absolute calibration**
- **Reduced time between production cycles**



Advantages

- **Simple**
"plug & play" technology
- **Fast**
reduced production time and times between cycles
- **Agile, small & light**

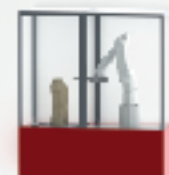


Machinable materials

- **Plaster**
- **Polyurethane**
- **Soft foam**
- **Wood (MDF)**

Technical specifications

Victor Compact



Victor Compact Plus



Victor Unlimited



Robot type	TX 60L steel frame aluminum cell and walls made of Makrolon ® 6mm		TX 60L steel frame aluminum cell and walls made of Makrolon ® 6mm		TX 90XL and RX160L for the wide option	
Maximum Load	5 kg		5 kg		9 kg to 35kg	
Weight	Robot arm only 52.5 kg		Robot arm only 52.5 kg		Robot arm only 119kg and 250kg	
Electricity requirement	One supply: 380V 50hz (2kw 16A) three-phase or 208V 60hz (2kw 20A) three-phase Norme CE and UL		One supply: 380V 50hz (2kw 16A) three-phase or 208V 60hz (2kw 20A) three-phase Norme CE and UL		1 supply: 380V 50hz (2kw 16A) three-phase or 208V 60hz (2kw 20A) three-phase 2nd supply 220V 50hz (2kw 16A) single phase or 208V 60hz (2kw 20A) three-phase Norme CE and UL	
Range	990mm		990mm		From 1440mm to 2100mm	
Dimensions	Mobile compact cell: 1800L x 800l x 2100h		Mobile compact cell: 2600L x 800l x 2100h		Dedicated area for: 2500x1500 single-station version 3000x3000 multi-station version 4000x4000 multi-station wide versio	
Options	Additional rotary table		-		Rotary table, vertical table, horizontal table	
Machining capacity	○ Rotary table capacity: Max. Diam. 500, Height 1000		○ Rotary table capacity: Max. Diam. 500, Height 1000		○ Rotary table capacity: Max. Diam. 600, Height 1400 or 1600 ○ Horizontal table capacity: 1000 x 900, H 400 and 1200x1000 H500 ○ Vertical table: Height 2000, Width 900	
Installation	Transport by land, air or sea. Preassembled and pre-calibrated cell. No need for industrial flooring.		Transport by land, air or sea. Preassembled and pre-calibrated cell. No need for industrial flooring.		Transport by land, air or river (3 or 4 Euro-pallets depending on options). On-site assembly and calibration and safety set-up of the dedicated room. The flooring must be suitable for the use of split-chemicals.	

Production capacity

Device	Machining time for a flexible foam (minutes)	Compatible with Victor Compact and Victor Compact + solution	Compatible with Victor Unlimited solution
Helmet	10	✓	✓
AFO's	6 AFO's in 30mn or 10 AFO's in 50mn	✓	✓
KAFO's	20	✓	✓
Prosthesis	10	✓	✓
Rigid mold for seats	25	✓	✓
Standing shell	40	✓ *small size	✓
Seat	35	✓ *small size	✓
Sole	6mn per pair	✓	✓
Bodyjacket	18	✓	✓
Mattresses	55		✓

*average machining time varies according to the density of the foams.



RODIN SAS

FRANCE
5 impasse des Mûriers
33700 Mérignac

+33 (0)5 56 47 77 13

+33 (0)5 56 47 77 14

info@rodin4d.com

Rodin GmbH

ALLEMAGNE
Elsternweg 4
D-89547 Gerstetten-Heldenfingen

+49 (0)7323 952501-0

+49 (0)7323 952501-9

info.de@rodin4d.com



Global CAD/CAM solution for O&P